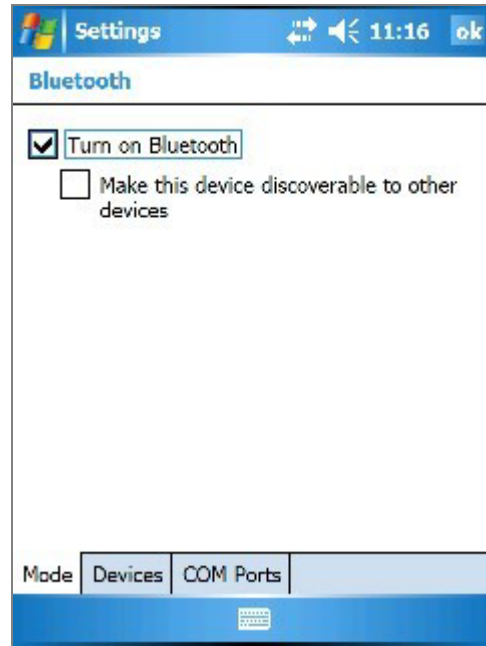


Connect bluetooth GPS receiver with Windows Mobile Version 5 Pocket PC



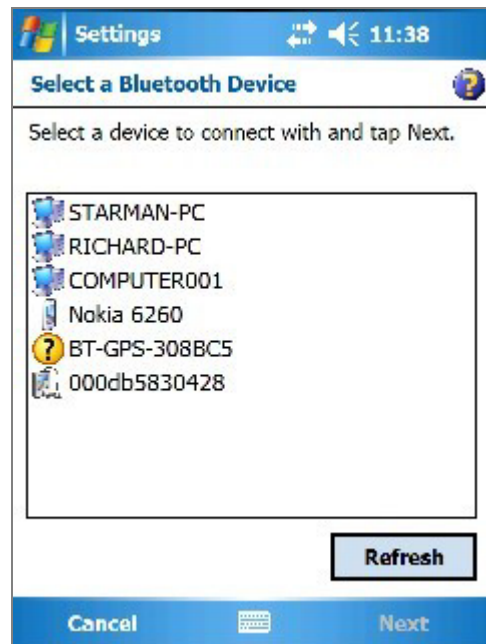
1. Tap on the bluetooth button on right lower corner.
2. Turn on your Bluetooth GPS receiver.



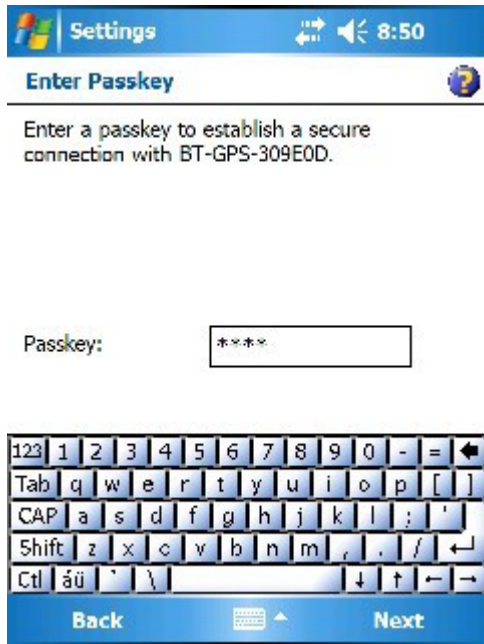
3. Check "Turn on Bluetooth".



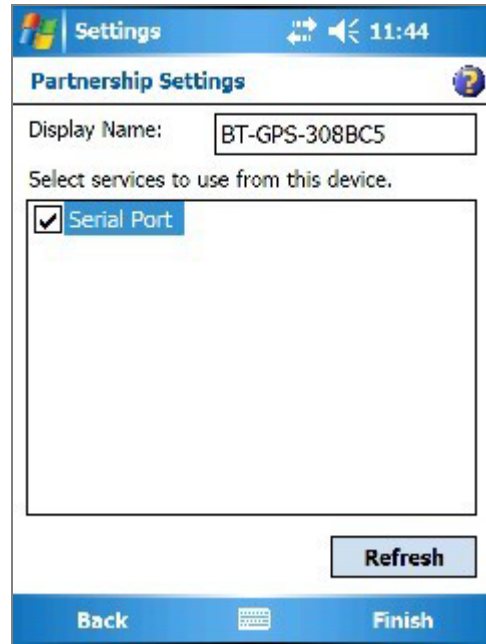
4. Tap the "Devices" tab, and tap "New Partnership...".



5. It will search for all the bluetooth devices.
6. Select a device (for example "BT-GPS-308BC5") and tap Next.



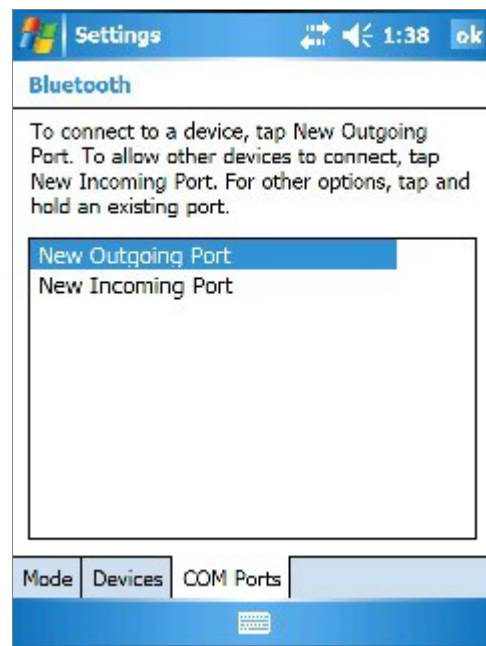
7. Enter Passkey "0000" and tap Next.



8. Check "Serial Port" and tap Finish.



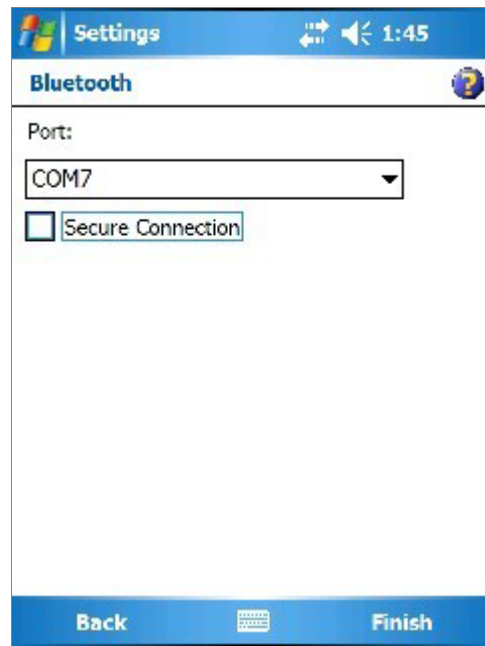
9. The device will be shown on the list.



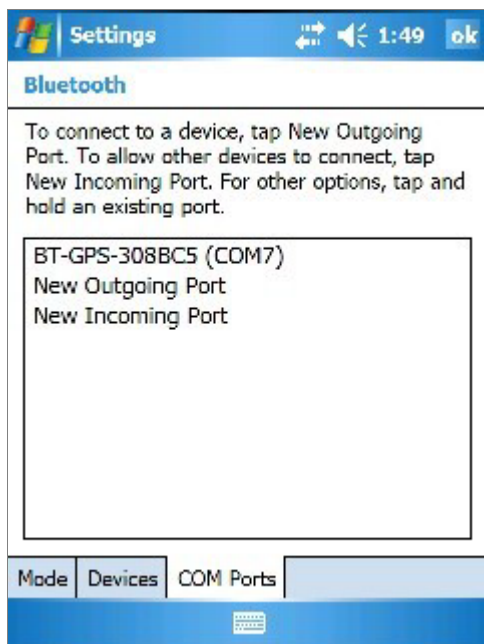
10. Tap the "COM Ports" tab, and select "New Outgoing Port".



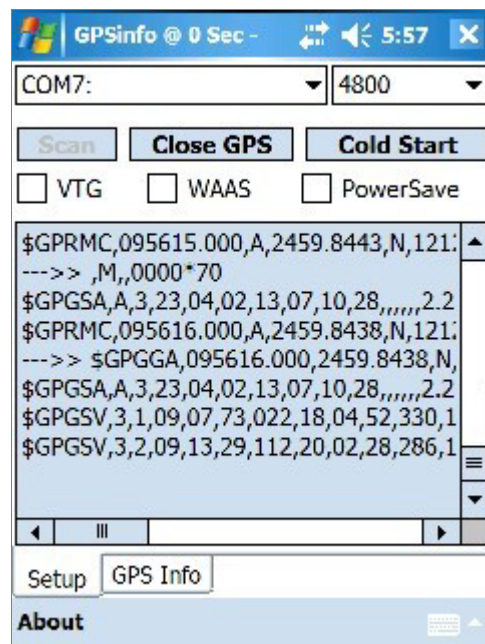
11. Select the device and tap Next.



12. Uncheck "Secure Connection" and from the drop down box select a COM port number (for example, COM7), and then tap Finish.



13. The device with its COM port number will be shown on the list.



14. Now you can go to GPSInfo program, set the correct COM port and test the GPS receiver.